

WGS 84 POSITIONS can be plotted directly on this chart

© Copyright 2018. All rights reserved. No part of this product may be reproduced in any form (including photocopying or by electronic means) without prior permission.

RIVER HUMBER

Bull Sand

DEPTHS IN METRES
SCALE 1 : 12 500

SURVEYED BY
Harbour Master, Humber
ASSOCIATED BRITISH PORTS
3rd August 2018

Depths are in metres and decimetres reduced to the chart datum given below
Underlined figures are drying heights in metres and decimetres above chart datum
Overhead clearance heights are above Highest Astronomical Tide
TIDAL LEVEL AND CHART DATUM

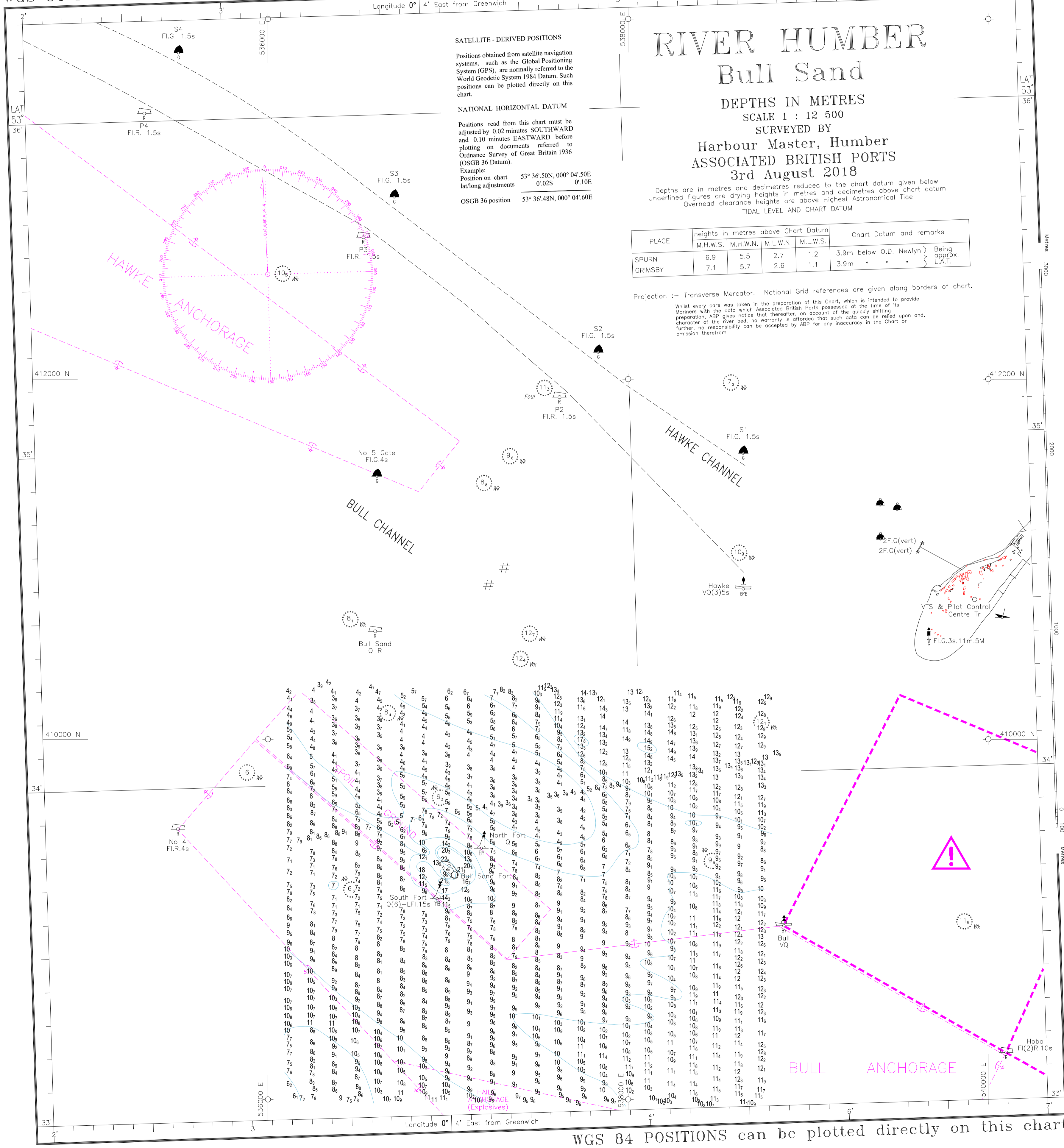
PLACE	Heights in metres above Chart Datum				Chart Datum and remarks
	M.H.W.S.	M.H.W.N.	M.L.W.N.	M.L.W.S.	
SPURN	6.9	5.5	2.7	1.2	3.9m below O.D. Newlyn } Being approx. } L.A.T. }
GRIMSBY	7.1	5.7	2.6	1.1	3.9m " " " " }

Projection :- Transverse Mercator. National Grid references are given along borders of chart.

Whilst every care was taken in the preparation of this Chart, which is intended to provide
Mariners with the data which Associated British Ports possessed at the time of its
preparation, ABP gives notice that, thereafter, on account of the quickly shifting
character of the river bed, no warranty is offered that such data can be relied upon and,
further, no responsibility can be accepted by ABP for any inaccuracy in the Chart or
omission therefrom

SATELLITE - DERIVED POSITIONS
Positions obtained from satellite navigation systems, such as the Global Positioning System (GPS), are normally referred to the World Geodetic System 1984 Datum. Such positions can be plotted directly on this chart.

NATIONAL HORIZONTAL DATUM
Positions read from this chart must be adjusted by 0.02 minutes SOUTHWARD and 0.10 minutes EASTWARD before plotting on documents referred to Ordinance Survey of Great Britain 1936 (OSGB 36 Datum).
Example:
Position on chart 53° 36' 50N, 000° 04' 50E
lat/long adjustments 0'.02S 0'.10E
OSGB 36 position 53° 36' 48N, 000° 04' 60E



WGS 84 POSITIONS can be plotted directly on this chart